

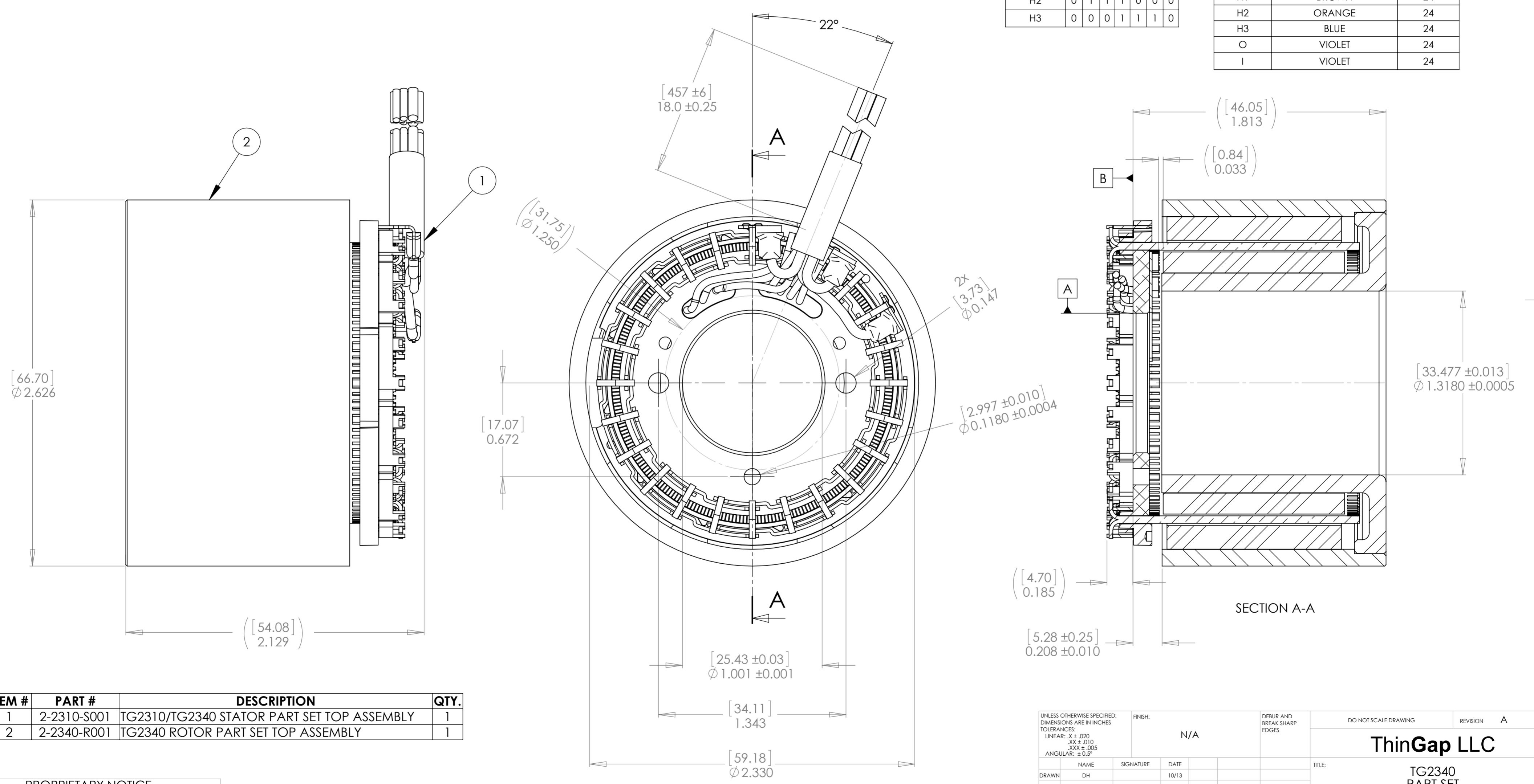
UNITS		ENGLISH	CONTINUOUS VALUES		SI
Tc	144	oz-in.	Torque -	1.02	Nm
Wc	7500	rpm	Speed -		
Ic	13.2	amps dc	Current -		
Vc	72	Volts dc	Voltage -		
Pc	800	watts	Shaft Power -		
Kt	10.9	oz-in./amp	Torque constant	0.08	Nm/amp
Rt	0.31	ohms	Terminal Resistance		
Wt. Total	22.5	oz	TG2340-PS weight, total	638	grams

REVISIONS			
REV	STATUS	BY	DATE
-	REF. 360735 REV B	DH	05/20/13
A	ECO #0145	DH	10/31/13

PHASE	WIRE COLOR	GAUGE
A	GRN	18
B	BLK	18
C	RED	18

	1	2	3	4	5	6	7
A	+	-	-	-	+	+	
B		+	+	-	-		
C	-	-		+	+	-	
SENSOR OUTPUT							
H1	1	1	0	0	0	1	1
H2	0	1	1	1	0	0	0
H3	0	0	0	1	1	1	0

PHASE	WIRE COLOR	GAUGE
+V	YELLOW	24
(-)	GREY	24
H1	BROWN	24
H2	ORANGE	24
H3	BLUE	24
O	VIOLET	24
I	VIOLET	24



ITEM #	PART #	DESCRIPTION	QTY.
1	2-2310-S001	TG2310/TG2340 STATOR PART SET TOP ASSEMBLY	1
2	2-2340-R001	TG2340 ROTOR PART SET TOP ASSEMBLY	1

**PROPRIETARY NOTICE**  
 The information and design disclosed herein are the property of ThinGap Corporation. Neither this document nor the information disclosed herein shall be reproduced or transferred to other documents or used or disclosed to others for manufacturing or any other purpose except as specifically authorized in writing. ThinGap Corporation expressly reserves all patent, proprietary, design, manufacturing, reproduction, and use and sales rights thereto, any article disclosed herein.

UNLESS OTHERWISE SPECIFIED: DIMENSIONS ARE IN INCHES TOLERANCES: LINEAR: .X ± .020 .XXX ± .010 XXX ± .005 ANGULAR: ± 0.5°		FINISH: N/A	DEBUR AND BREAK SHARP EDGES	DO NOT SCALE DRAWING	REVISION A
DRAWN: DH			TITLE: TG2340 PART SET TOP ASSEMBLY		
CHK'D:			MATERIAL: N/A		
APP'VD:			DWG NO.: 2-2340-P001		
MFG:			SCALE:		
G.A.:			SHEET 1 OF 1		